

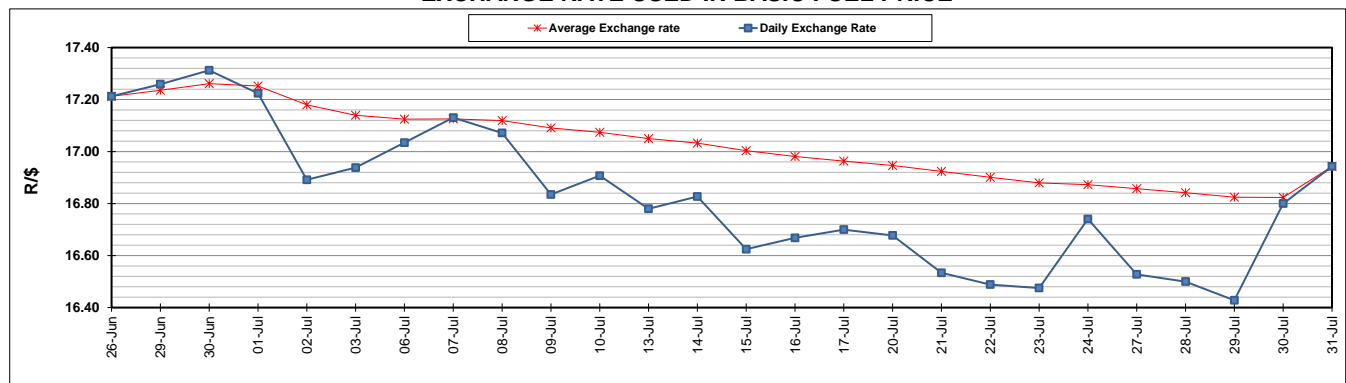
	PETROL 95 ULP	PETROL 93 ULP & LRP	DIESEL 0.05%	DIESEL 0.005%	ILL. PAR.
GAUTENG PUMP PRICE (SA c/l) AS FROM 05/08/2020	1,517.000	1,488.000	-	-	-
WHOLESALE PRICE (SA c/l) AS FROM 05/08/2020	-	-	1,348.560	1,352.960	742.828
SINGLE NATIONAL MAXIMUM RETAIL PRICE	-	-	-	-	934.000
BASIC FUEL PRICE - 31/07/2020 (SA c/l)	527.459	520.046	577.907	581.697	514.894
PRESS RELEASE CONTRIBUTION TO BFP 31/07/2020 - 31/07/2020 (SA c/l)	564.770	545.770	552.630	557.030	499.128
UNIT OVER/(UNDER) RECOVERY - 31/07/2020 (SA c/l)	37.311	25.724	(25.277)	(24.667)	(15.766)
AVERAGE BASIC FUEL PRICE 31/07/2020 - 31/07/2020	527.459	520.046	577.907	581.697	514.894
AVERAGE UNIT OVER/(UNDER) RECOVERY 31/07/2020 - 31/07/2020	37.311	25.724	(25.277)	(24.667)	(15.766)

### ANALYSIS MOVEMENT OF AVERAGE OVER/(UNDER) RECOVERY

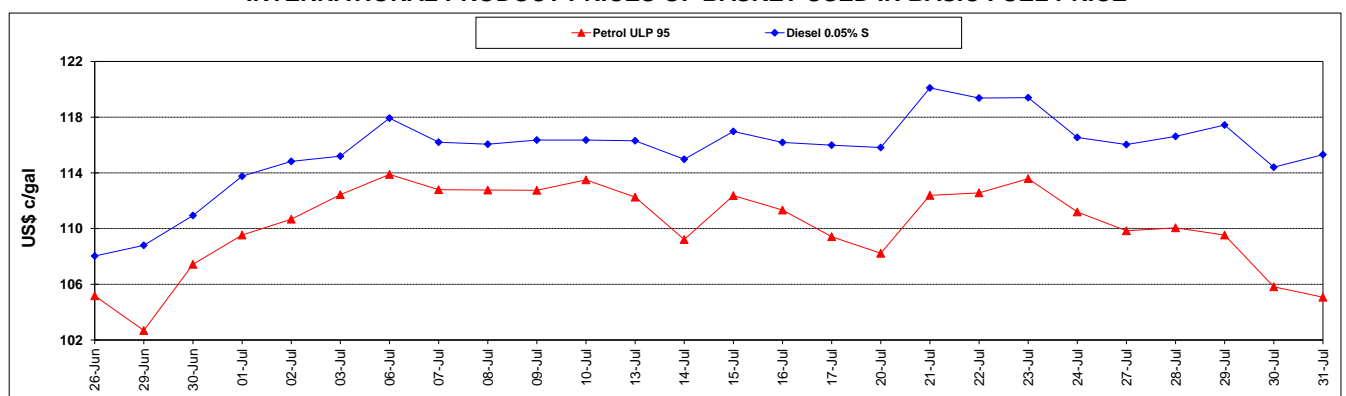
	PETROL 95	PETROL 93	DIESEL 0.05%	DIESEL 0.005%	ILL. PAR.
- MOVEMENT IN INTERNATIONAL PRODUCT PRICES	41.034	29.395	(21.198)	(20.561)	(12.131)
- MOVEMENT IN EXCHANGE RATE	(3.723)	(3.671)	(4.079)	(4.106)	(3.635)
AVERAGE UNIT OVER/(UNDER) RECOVERY 31/07/2020 - 31/07/2020	37.311	25.724	(25.277)	(24.667)	(15.766)

**R/\$ EXCHANGE RATE - (R/\$16.9430 - 31/07/2020)**

### EXCHANGE RATE USED IN BASIC FUEL PRICE



### INTERNATIONAL PRODUCT PRICES OF BASKET USED IN BASIC FUEL PRICE



### BASIC FUEL PRICE IN SA CENTS PER LITRE

